

Submittal Data Sheet

**Project
Information**

Project Number _____ Approval _____

Features

- ETL Listed to UL 1331 and CSA Z9170-1
- Conforms to NFPA 99 and CGA standards
- Accepts Ohmeda/Ohio gas specific compatible male adaptors
- Ease of maintenance without removing the faceplate using an insertion tool
- Pin indexed faceplate and back
- Removable front assembly.
- All outlets are 100% tested for flow and leaks
- Full faceplate color coding
- 360° swivel inlet tube
- Made in the U.S.A.

Specification

The medical gas outlets shall be Tri-Tech Medical quick connect medical gas outlets. The outlets shall be modular singles, and shall incorporate nameplate color-coding in accordance with NFPA 99.

The medical gas outlets shall be designed so that the primary check valve can be removed for service without shutting off the gas supply to the outlet. Upon removal of the nameplate assembly, the secondary check valve shall operate automatically to stop the free flow of the pressure gas. There shall be no secondary check for Vacuum or WAGD services. The seal between the nameplate and the rough-in shall be a double O-ring which is serviceable without shutting off the gas service and shall be capable of supporting 10 pounds @ 2" from the nameplate without leaking.

The outlet nameplate shall be permanently color coded with a durable, scratch resistant and protective label. The outlet trim plate part # XC1000-10 (optional – shown in right bottom photo) shall be durable plastic, scratch resistant, attached with the nameplate to the rough-in assembly, and provide automatic adjustment from 1/8 to 3/4 of an inch. The name of the gas service shall be permanently marked on the outlet bracket and the outlet.



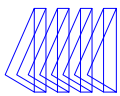
Example – XQ5124 Oxygen

The outlet's rough-in supply connection shall be either a DISS male (XQ53 or XQ54 series) or a 1/4 hose barb for positive gas pressure services or a 5/16" hose barb for vacuum and WAGD services (XQ51 or XQ52 series).

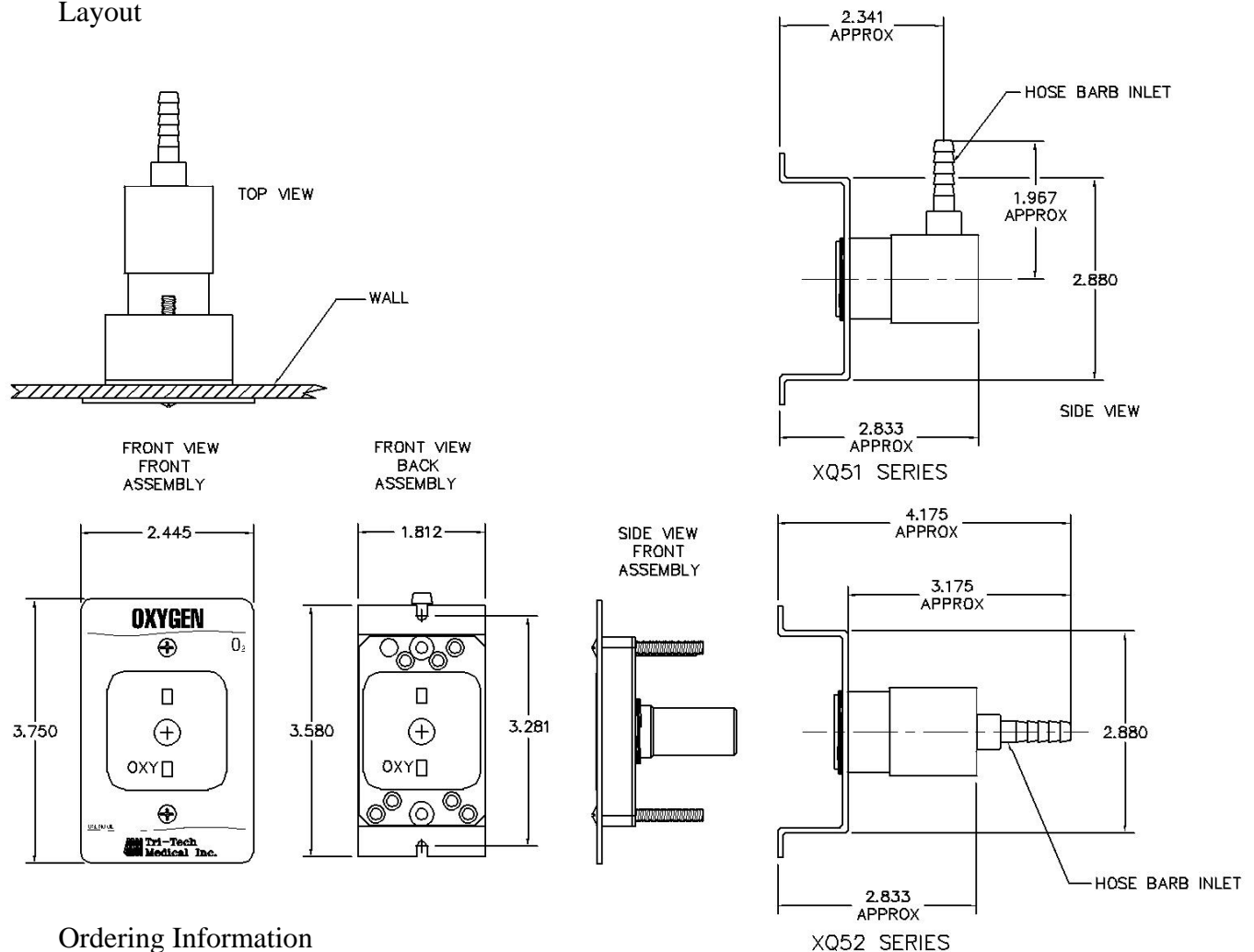
Medical gas outlets shall be cleaned for oxygen service in accordance with the current Compressed Gas Association (CGA) Pamphlet G-4.1, capped and placed in a protective container for shipment. The outlets shall be installed in strict accordance with manufacturer's instructions, and tested before use in conformance with local and federal codes.



XQ5316 Oxygen with XC1000-10 trim plate



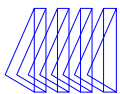
Layout



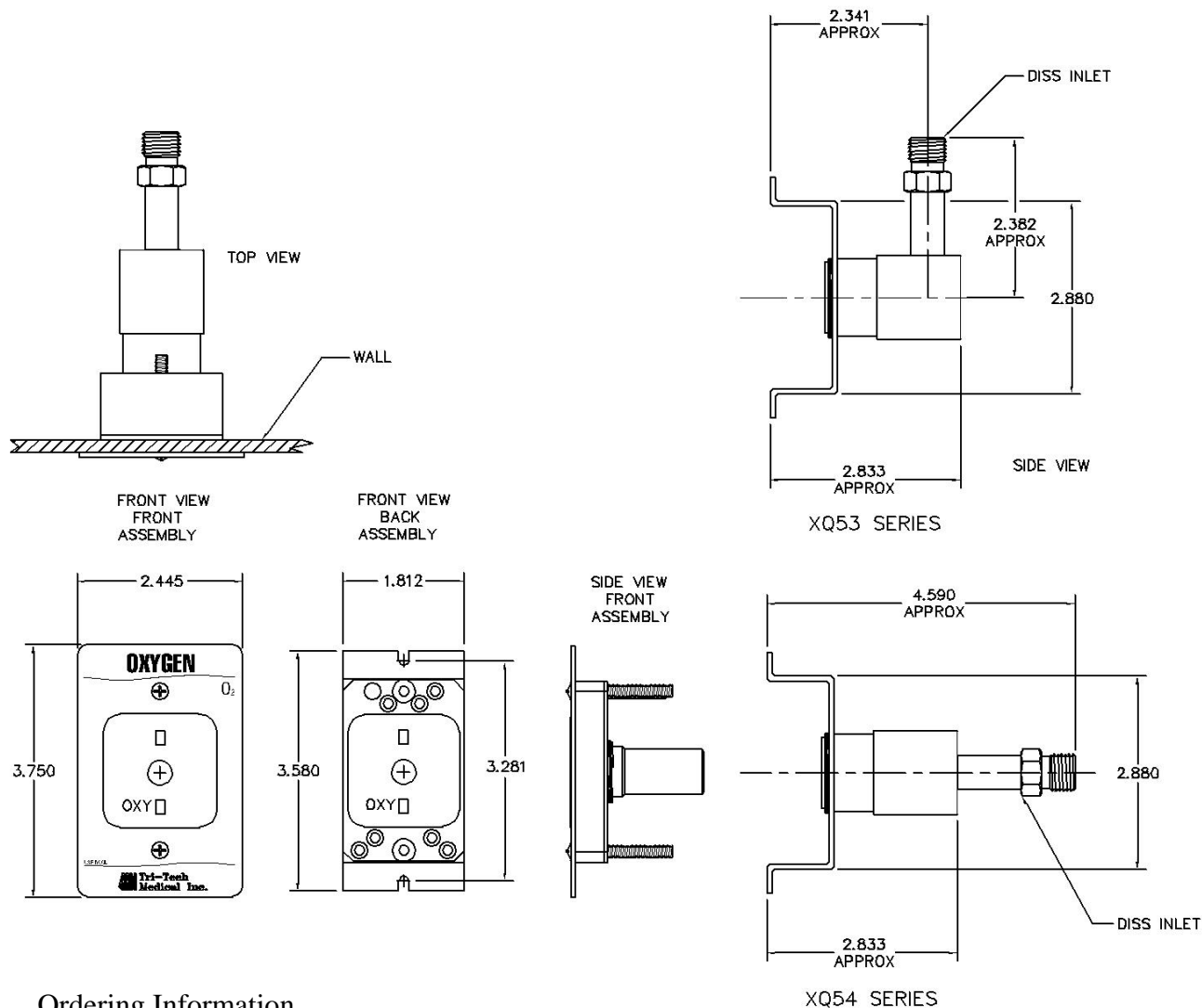
Ordering Information

Gas Service	Nitrous Oxide	Carbon Dioxide	Medical Air	Medical Vacuum	Oxygen	WAGD
Part Number	XQ5104	XQ5108	XQ5116	XQ5122	XQ5124	XQ5132
Hose Barb Size	1/4	1/4	1/4	5/16	1/4	5/16

Gas Service	Nitrous Oxide	Carbon Dioxide	Medical Air	Medical Vacuum	Oxygen	WAGD
Part Number	XQ5204	XQ5208	XQ5216	XQ5222	XQ5224	XQ5232
Hose Barb Size	1/4	1/4	1/4	5/16	1/4	5/16



Layout



Ordering Information

Gas Service	Nitrous Oxide	Carbon Dioxide	Medical Air	Medical Vacuum	Oxygen	WAGD
Part Number	XQ5304	XQ5308	XQ5316	XQ5322	XQ5324	XQ5332

Gas Service	Nitrous Oxide	Carbon Dioxide	Medical Air	Medical Vacuum	Oxygen	WAGD
Part Number	XQ5404	XQ5408	XQ5416	XQ5422	XQ5424	XQ5432