

Submittal Data Sheet

**Project
Information**

Project Number _____ Approval _____

Features

- UL Listed to UL 1331 and CSA Z9170-1.
- Conforms to NFPA 99 and CGA standards
- Accepts Ohmeda/Ohio gas specific compatible male adaptors
- Compensates for variation in wall thicknesses from 1/2" to 1 1/4"
- Gas specific indexing
- Modular design
- 5" centers
- All outlets are 100% tested for flow and leaks
- Nameplate color coding per NFPA 99
- 360° swivel inlet tube
- Metal back and nameplate
- Strength of connections provides support for dispensing equipment without the use of additional brackets
- Made in the U.S.A.

Specification

The medical gas wall outlets shall be Tri-Tech Medical Ohmeda/Ohio compatible quick connect medical gas outlets. The outlets shall be modular singles, and shall incorporate nameplate color-coding in accordance with NFPA 99. The single modular outlets shall be of a design that provides for ganging of rough-in plates in the field to form multiples. The gas services shall be sequentially arranged and located as shown on the plans with a minimum centerline spacing of 5" inches (12.5 cm) between outlets.

The medical gas outlets shall be designed so that upon removal of the nameplate assembly, the secondary check valve shall operate automatically to stop the free flow of the positive pressure gas services. There shall be no secondary check for Medical Vacuum or WAGD services. The seal between the nameplate and the rough-in shall be a double O-ring which is serviceable without shutting off the gas service and is capable of supporting 10 pounds @ 2" from the nameplate without leaking.

The outlet nameplate shall be permanently color coded with a durable, scratch resistant and protective label. The outlet trim plate shall be durable plastic, attached



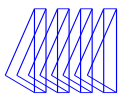
Outlet XQ1124 Shown

with the nameplate to the rough-in assembly, and provide automatic plaster adjustment from 1/2 to 1 1/4 of an inch (1.3 cm to 3 cm). The name of the gas service shall be permanently marked on the outlet bracket and the outlet. The outlet's rough-in supply tube shall be a 7 inch (18 cm) length of 1/2 O.D. copper Type K for all gas services and labeled with the name of the gas service.

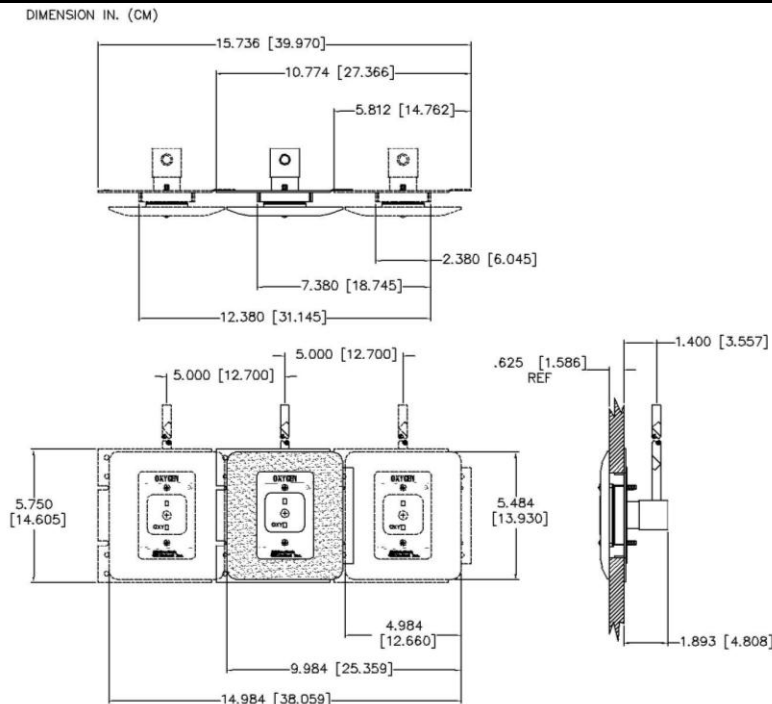
Medical gas outlets shall be cleaned for oxygen service in accordance with the current Compressed Gas Association (CGA) Pamphlet G-4.1, capped and placed in a protective container for shipment. The outlets shall be installed in strict accordance with manufacturer's instructions, and tested before use in conformance with local and federal codes.

MRI compatible models are available (See ordering information chart) and are made with non-ferrous materials.





Layout



Ordering Information

Standard Recessed Outlets Complete - with the Plastic White Trim Plate

Gas Service	Recessed Wall Complete	MRI Compatible
Nitrous Oxide	XQ1104	*XQ1104-MRI
Carbon Dioxide	XQ1108	*XQ1108-MRI
Nitrogen	N/A	N/A
Medical Air	XQ1116	XQ1116-MRI
Medical Vacuum	XQ1122	XQ1122-MRI
Oxygen	XQ1124	XQ1124-MRI
WAGD	XQ1132	*XQ1132-MRI
Instrument Air	N/A	N/A
Slide	XF1144	*XF1144-MRI

**Indicates that these are NOT UL listed Outlets*

If Ordering Die Cast Trim Plates you need Back Bodies & Faceplates ordered Separately

Gas Service	Back Body ½ Tube Size	MRI Compatible	Outlet Faceplate	MRI Compatible	Trim Plate Die Cast White	Trim Plate Die Cast Pewter
Nitrous Oxide	XC1104-A	*XC1104-A-MRI	XQ1004-A	*XQ1004-A-MRI	XC1100-9DC	XC1100-9DCP
Carbon Dioxide	XC1108-A	*XC1108-A-MRI	XQ1008-A	*XQ1008-A-MRI		
Nitrogen	N/A	N/A	N/A	N/A		
Medical Air	XC1116-A	XC1116-A-MRI	XQ1016-A	XQ1016-A-MRI		
Medical Vacuum	XC1122-A	XC1122-A-MRI	XQ1022-A	XQ1022-A-MRI		
Oxygen	XC1124-A	XC1124-A-MRI	XQ1024-A	XQ1024-A-MRI		
WAGD	XC1132-A	*XC1132-A-MRI	XQ1032-A	*XQ1032-A-MRI		
Instrument Air	N/A	N/A	N/A	N/A		
Slide	Die Cast Pewter		Pewter MRI Compatible		Die Cast White	Die Cast MRI Compatible
	XF1145		*XF1145-MRI		XF1146	XF1146-MRI

To place an order or request additional information call toll-free 1-800-253-8692 or fax us at 1-440-937-5060 or e mail us at sales@tri-techmedical.com. Please visit our web-site at www.tri-techmedical.com.