

---

**Submittal Data Sheet**

---

**Project  
Information**

Project Number \_\_\_\_\_ Approval \_\_\_\_\_

**Features**

- ETL Listed to UL 1331 and CSA Z9170-1
- Conforms to NFPA 99 and CGA standards
- Accepts Allied/Chemetron gas specific compatible male adaptors
- Pin indexed faceplate and back
- Removable front assembly.
- All outlets are 100% tested for flow and leaks
- Full faceplate color coding
- 360° swivel inlet tube
- Made in the U.S.A.

**Specification**

The medical gas outlets shall be Tri-Tech Medical Allied/Chemetron compatible quick connect medical gas outlets. The outlets shall be modular singles, and shall incorporate nameplate color-coding in accordance with NFPA 99.

The medical gas outlets shall be designed so that upon removal of the nameplate assembly, the secondary check valve shall operate automatically to stop the free flow of the positive pressure gas services. There shall be no secondary check for Medical Vacuum or WAGD services. The seal between the nameplate and the rough-in shall be a double O-ring which is serviceable without shutting off the gas service and is capable of supporting 10 pounds @ 2" from the nameplate without leaking.

The outlet nameplate shall be permanently color coded with a durable, scratch resistant and protective label. The outlet trim plate part # XC1000-10 (optional – shown in right bottom photo) shall be durable plastic, scratch resistant, attached with the nameplate to the rough-in assembly, and provide automatic adjustment from 1/8 to 3/4 of an inch. The name of the gas service shall be permanently marked on the outlet bracket and the outlet.



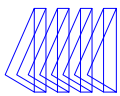
Example – XA5324 Oxygen

The outlet's rough-in supply connection shall be either a DISS male (XA53 or XA54 series or a 1/4 hose barb for positive gas pressure services or a 5/16" hose barb for vacuum and WAGD services (XA51 or XA52 series).

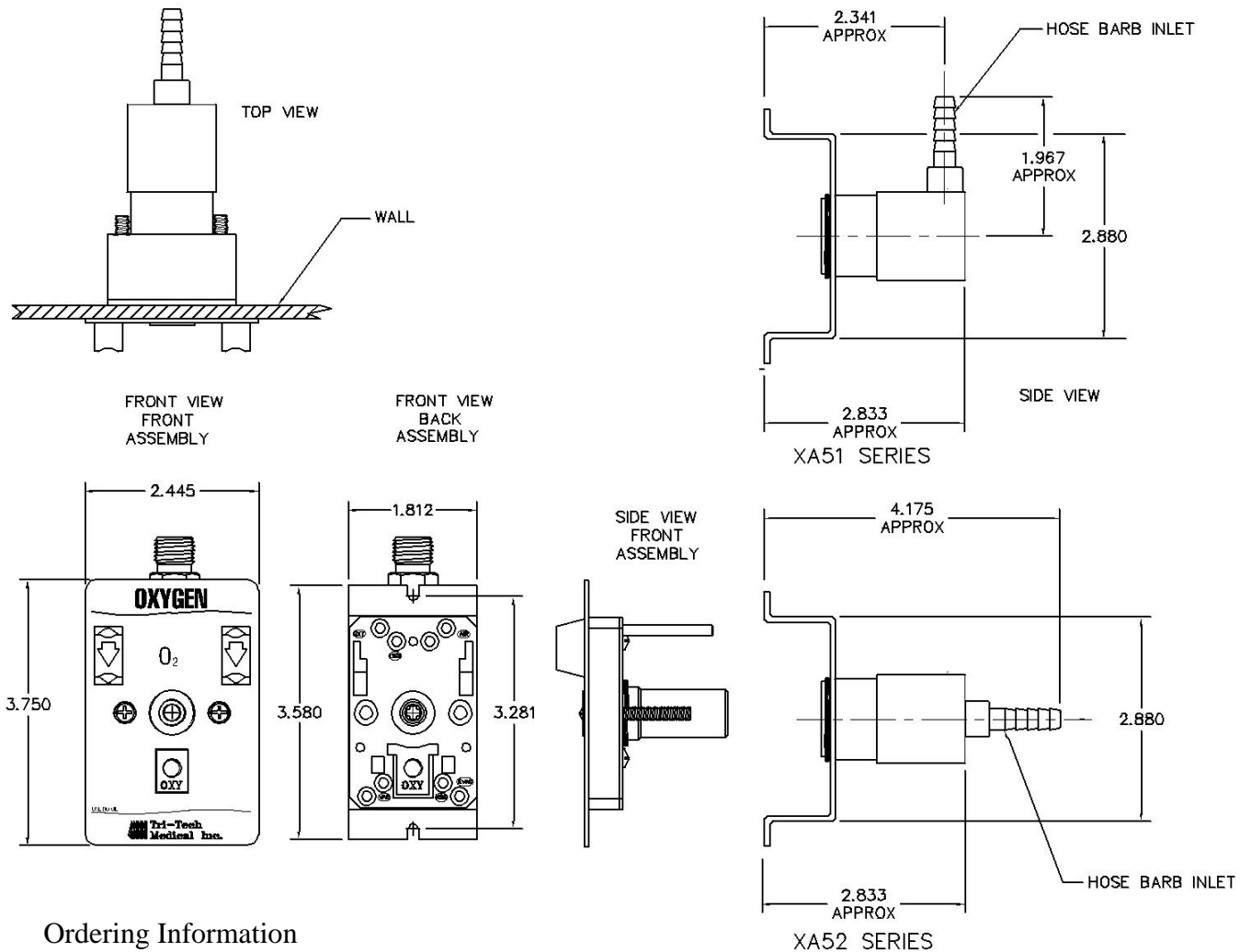
Medical gas outlets shall be cleaned for oxygen service in accordance with the current Compressed Gas Association (CGA) Pamphlet G-4.1, capped and placed in a protective container for shipment. The outlets shall be installed in strict accordance with manufacturer's instructions, and tested before use in conformance with local and federal codes.



XA5324 Oxygen with XC1000-10 trim plate



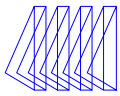
**Layout**



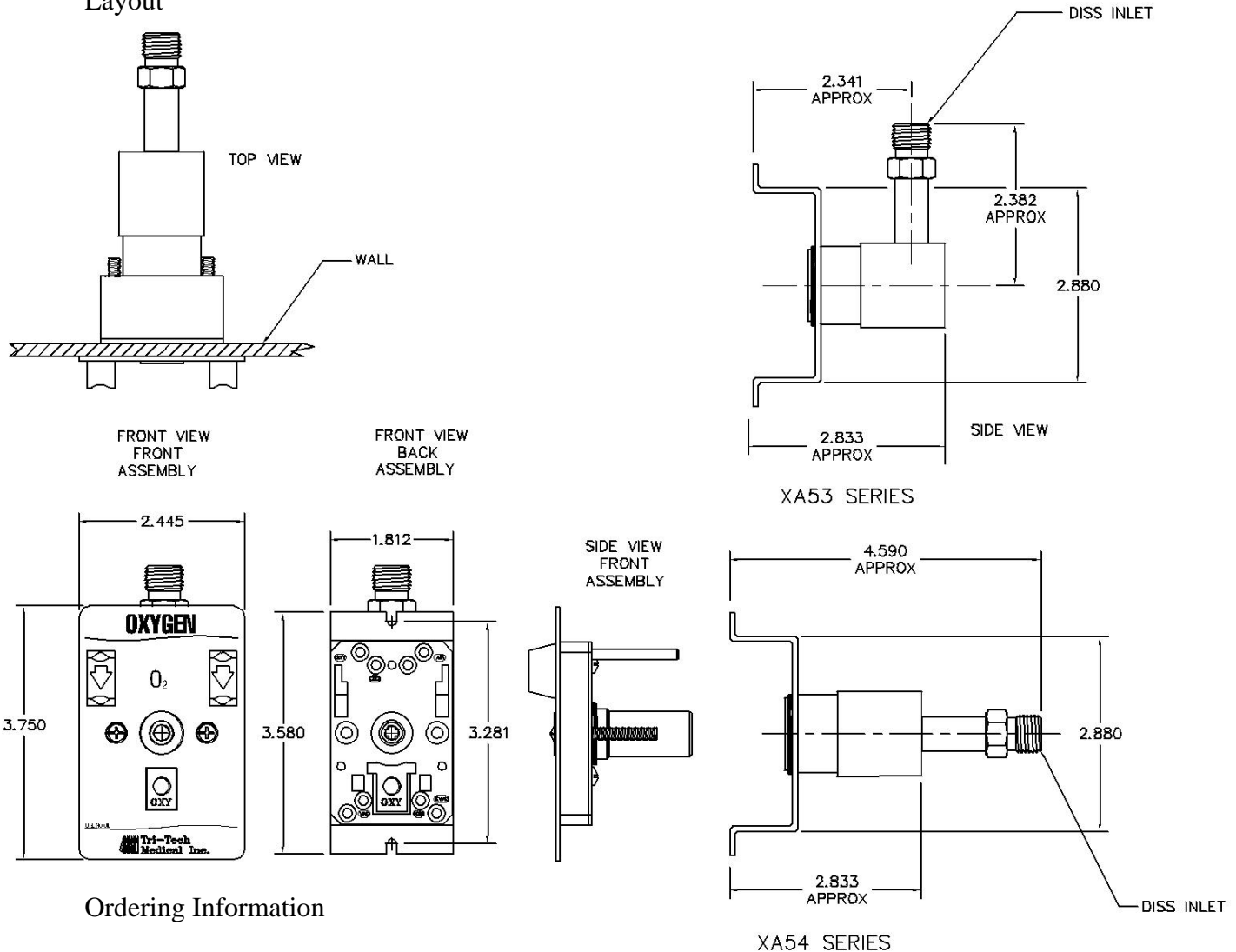
**Ordering Information**

Gas Service	Nitrous Oxide	Carbon Dioxide	Medical Air	Medical Vacuum	Oxygen	WAGD
Part Number	XA5104	XA5108	XA5116	XA5122	XA5124	XA5132
Hose Barb Size	1/4	1/4	1/4	5/16	1/4	5/16

Gas Service	Nitrous Oxide	Carbon Dioxide	Medical Air	Medical Vacuum	Oxygen	WAGD
Part Number	XA5204	XA5208	XA5216	XA5222	XA5224	XA5232
Hose Barb Size	1/4	1/4	1/4	5/16	1/4	5/16



**Layout**



**Ordering Information**

Gas Service	Nitrous Oxide	Carbon Dioxide	Medical Air	Medical Vacuum	Oxygen	WAGD
Part Number	XA5304	XA5308	XA5316	XA5322	XA5324	XA5332

Gas Service	Nitrous Oxide	Carbon Dioxide	Medical Air	Medical Vacuum	Oxygen	WAGD
Part Number	XA5404	XA5408	XA5416	XA5422	XA5424	XA5432