

500 Series Chemetron® Quick-Connect Medical Gas Outlets

Elements

- Safety keyed to help prevent cross-connections
- Conforms to NFPA 99 and CGA standards
- Built-in push-button latch release mechanism
- Modular design
- Cleaned for oxygen service
- UL listed



Description

The Chemetron® 500 Series outlet stations provide convenient access to medical gases in patient care locations. They are fully compatible with Chemetron style latch-keyed adapters.

The outlets are field-gangable in any order desired by the facility. Outlets are spaced 5" (12.7 cm) center to center, and may be ganged with Chemetron modular electrical assemblies in a console arrangement. Outlet finish plates and rough-in plates are pin indexed using steel pins for positive cross-connection prevention. Primary valves are separate from the finish plate, allowing easy testing for leaks and cross connection. Primary valves are made of brass and contain a chrome-plated self-sealing poppet. Primary valves are field adjustable to compensate for variations in plaster thickness of 1/2" to 3/4". Outlets may be special ordered with extended valve bodies that allow for an additional 3/8" or 3/4" adjustment.

The type K copper inlet tube has a 1/2" OD connection, and can rotate 360 degrees to accommodate any field piping arrangement. The primary gas check can be serviced without shutting off the gas supply.

Finish plates consist of a stainless steel insert surrounded by a silver metallic-finish ABS high-impact decorative trim.



500 Series Chemetron Quick-Connect Medical Gas Outlets

The outlet stations are fully compliant with NFPA 99 and CSA Z-305, and are cleaned for oxygen service in accordance with CGA G-4.1. The outlet is UL listed. Finish plates consist of a stainless steel insert surrounded by a silver metallic-finish ABS high-impact decorative trim. Gas identification is provided by a polycarbonate plastic insert, color-coded by gas service, per NFPA and CGA.

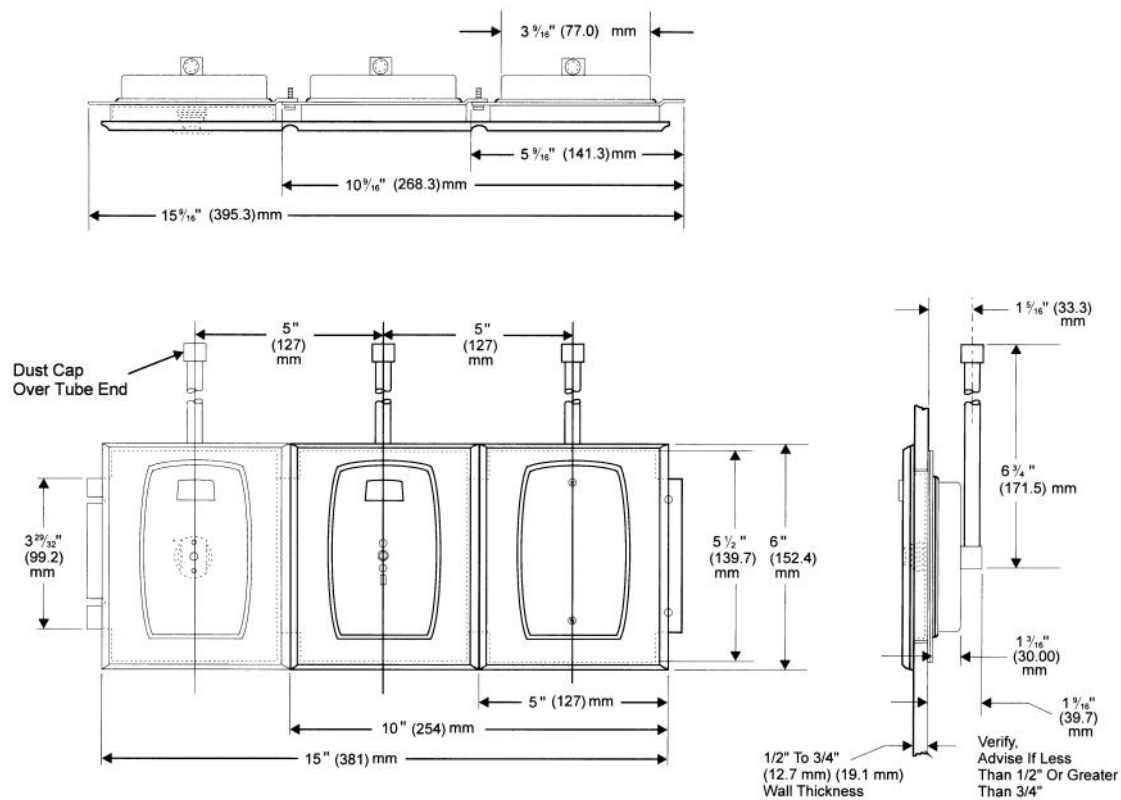
The latch release is color-coded and labeled for the gas service. Release is easily accomplished with one hand using a push button release. The primary valve poppet provides a dust-proof seal. Vacuum outlets may be used with or without slide brackets for vacuum collection bottles of up to 1/2-gallon capacity. (Where slide brackets are used, order one per vacuum outlet.)

Ordering Information

Gas Service	Catalog Number U.S. Color Codes	Quantity	Catalog Number ISO Color Codes	Quantity
Oxygen	64-01-5001P		64-01-5051P	
Vacuum	64-01-5002P		64-01-5052P	
Medical Air	64-01-5003P		64-01-5053P	
Nitrous Oxide	64-01-5004P		64-01-5004P	
WAGD*	64-01-5006P		64-01-5006P	
Carbon Dioxide	64-01-5007P		64-01-5007P	
Oxygen/CO ₂ (CO ₂ less than 7%)	64-01-5008P		64-01-5058P	
Slide Bracket	64-06-0001P		64-06-0001P	

*Waste Anesthetic Gas Disposal (formerly Evacuation)

Dimensional Data



Refer to installation instructions prior to assembly.

