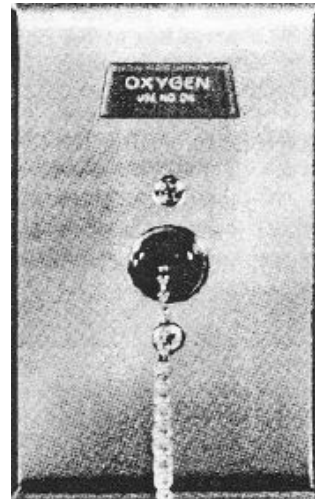


460 Series Chemetron® DISS Medical Gas Outlets

Elements

- Safety-keyed to help prevent cross-connections
- Conforms to NFPA 99
- Rough-in channel box protected by metal plaster guard until final assembly
- Adjustable valve mechanism to compensate for variations in plaster thicknesses up to 3/8"
- Cleaned for oxygen service
- UL listed



Description

The Chemetron® DISS outlet stations provide convenient access to medical gases in patient care locations. They are fully compatible with DISS style diameter indexed threaded adapters.

The face plate is stainless steel with a satin finish. Outlet finish plates and rough-in plates are safety keyed for positive cross-connection prevention. Primary valves are made of brass and contain a chrome-plated self-sealing poppet. Primary valves are field-adjustable to compensate for variations in plaster thickness of 1/2" to 3/4". Outlets may be special ordered with extended valve bodies that allow for an additional 3/8" or 3/4" adjustment.

The type K copper inlet tube has a 1/2" OD connection. The primary gas check can be serviced without shutting off the gas supply.

The outlet stations are fully compliant with NFPA 99 1999 and are cleaned for oxygen service in accordance with CGA G-4.1. The outlet is UL listed.

Vacuum outlets may be used with or without slide brackets for vacuum collection bottles of up to 1/2-gallon capacity. (Where slide brackets are used, order one per vacuum outlet.)

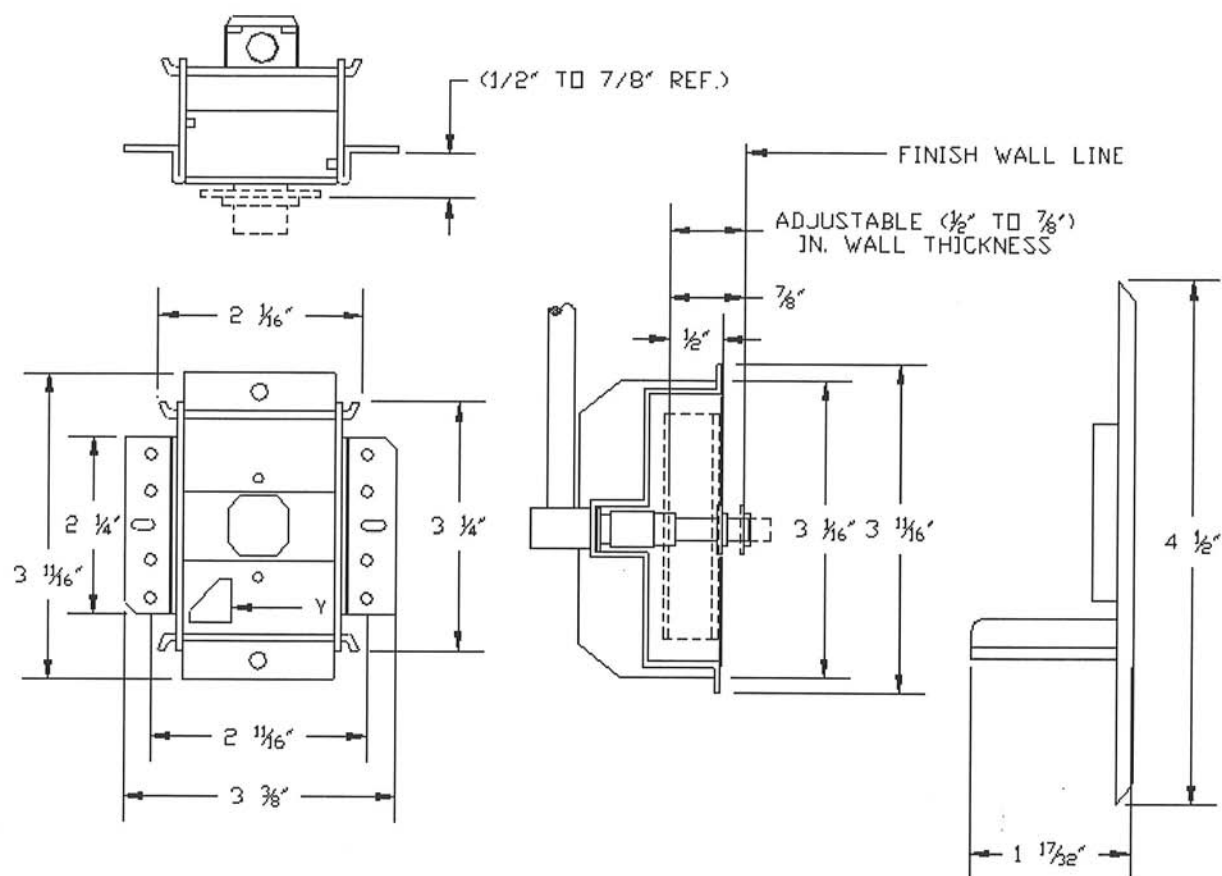
Materials

Component	Material
Valve Body	Machined Brass Viton Seal
Valve Block	Brass Forging/Machined Brass Type K or L Seamless Copper Tube Viton Seal
Outlet Box	20 Gauge Steel
Cover Plate	Stainless Steel #4 Satin Finish Buffed Edge Plastic Color-Coded Release Button

Ordering Information

Gas Service	Top Inlet Connection	Quantity
Oxygen	64-35-0001	
Vacuum	64-35-0004	
Air	64-35-0002	
Nitrous Oxide	64-35-0005	
Evacuation Vacuum	64-35-0009	
Carbon Dioxide	64-35-0003	
Oxygen/CO2 (CO2 less than 7%)	64-35-0008	
Nitrogen	64-35-0010	
Slide Bracket	64-59-1212	

Dimensional Data



Refer to installation instructions prior to assembly.

